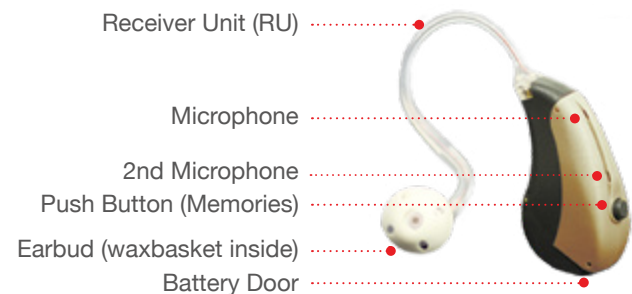


Identifying Your Device



The serial number is on the bottom of the case while the model is on the battery door.






Features*

- 100% Digital
- Push Button (Multi-memory)
- Adaptive Noise Reduction
- Directional Microphones
- Adjustable Power On Delay
- Low Battery Indicator
- Memory Tone Indicator
- Telecoil
- Replaceable Snap-Tip Earbuds
- Adaptive Feedback Reduction
- Adaptive Speech Enhancement

* Not all features may apply to your instrument.

World Headquarters

 HearingDirect Ltd
Unit 4 Nine Mile Water
Nether Wallop
SO20 8DR
United Kingdom

 1-800-216-2331
 CustomerCare@HearingDirect.com
 HearingDirect.com

UG / HD430 / USA 8 © 16

Welcome to a whole new world of hearing™

HD430 RIC



Welcome back to the world of sound!™

A belief that in order to succeed, you must have a certain passion and desire to give your every endeavor your very best. We forge this very commitment to excellence into every hearing instrument in our portfolio.

A rare combination of state of the art technology and custom craftsmanship brings you the best instruments available today. Currently, our products are distributed all over the world. We thank you for allowing us to assist with your hearing needs.

These instructions along with the guidance from HearingDirect.com will help you attain maximum benefit from your hearing instrument(s).

Powering your Device

Batteries - Uses a 312 battery

On - With your finger, gently open the door. Insert battery and close the door. If your instrument is equipped with a power on delay, you will be given several seconds to seat the device comfortably in your ear before it turns on.

When placing the battery in your instrument, be sure to position the positive (+) symbol face up into the battery door.

Off - To turn your hearing instrument off, simply open the battery door wide enough so that the internal contacts are no longer touching the battery. Store in a safe dry place.

CAUTION: Batteries are dangerous if swallowed! Keep batteries out of the reach of children. Never put batteries in your mouth for any reason they are easily swallowed. In the event a battery has been swallowed, seek immediate medical attention. For more information call the National Battery Hotline at 202-625-3333.

NOTE: Some irritation may occur due to becoming accustomed to wearing a new hearing instrument. If swelling or redness occurs, discontinue use and visit your Doctor.

Inserting / Removing your Device

Inserting - Before insertion, make sure the battery door is closed properly. The procedure for inserting your instrument:



1. To properly position your hearing instrument, hold the base of the Receiver Unit (RU) wire with the thumb and index finger, allowing the earbud to be freely inserted into the ear canal.



2. At this point, the instrument is inverted from its final position. Carefully insert the earbud into the ear canal



3. While holding the RU in place in the ear canal with your thumb or index finger, carefully rotate the hearing instrument over the top of your ear while pressing it against the head.



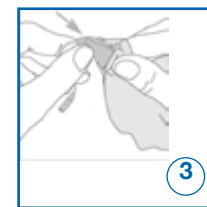
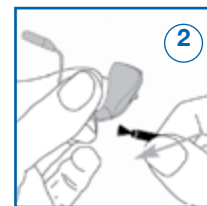
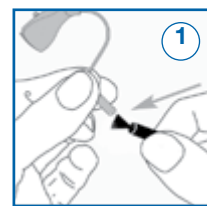
4. If correctly placed, the hearing instrument will be virtually invisible to others. Make sure that the receiver unit is still properly positioned in your ear canal.

Maintenance for your Device

It is recommended that you clean your hearing instrument daily. Inspect the wax basket and the microphone opening(s) to make sure they are clear of ear wax and debris.

Daily, brush the white wax basket while holding instrument upside down (1), so debris will fall out of the earbud wax basket. Also, brush the microphone port (2). If the hearing instrument is weak or not working, you may need to replace the earbud.

Before you store the instrument, wipe the instrument with a dry tissue (3). Do not use a wet wipe or alcohol because moisture may seep into the receiver opening.

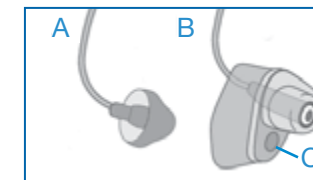


Replacing Earbuds / Tips

Earbuds / Tips

- A. RU with earbud
- B. RU with ZipTip -

Keep the small vent hole (C) to the bottom of the ear farther from the device



Removing and installing the earbud

Hold the RU wire (D) with one hand, and pull the white earbud in the opposite direction. Snap on a new earbud until you feel it click. Earbuds are generally not cleanable.

